

HP Refill Instructions

Black Cartridges: C6656 (#56), C8727 (#27), C9351 (#21)
Colour Cartridges: C6657 (#57), C8728 (#28), C9352 (#22)

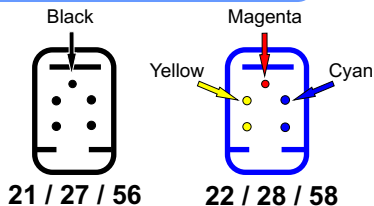
THINGS TO KNOW

1. All cartridges will fail due to mechanical fatigue after a few refills. Handling the cartridge with care and top up the cartridge before it is empty will prolong the life of your cartridge.
2. Avoid touching the copper-coloured electrical contact points with your hands. Oil from your hands will corrode the surface, causing the cartridge to fail.
3. Do not scrap the printhead nozzle with materials - as this will damage the small printhead nozzles.
4. Refill the cartridge before it is empty. Running the cartridge when it is dry will burn and damage the printhead nozzles.
5. HP's ink status monitor is not very precise. It only gives an estimate of the amount of ink inside the cartridge. You should top up the cartridge when its ink status monitor first lights or before it lights to prevent printhead burn-out.

REPARATIONS

1. Work in a clean area without clutter - line your working desk with waste newspaper if necessary.
2. Have ready some tissues for wiping up.
3. Place cartridge into protection clip supplied with your refill kit.
4. Some tissues and a cup of warm water.

FILLING HOLES



* Arrows indicate the recommended refilling holes.

* Remove the top sticker to reveal the holes (or use special refilling clips which have positioning holes on the tops of the cartridges available with your refilling kits).

MATERIALS

1. Ink(s) for your cartridge model
2. Syringe(s)
3. Needle(s)
4. Cartridge protection clip(s)
5. Clean kitchen paper towels

MAXIMUM INK REFILL

21 - 5 mL max
27 - 10 mL (+ 5mL max)
57 - 10 mL (+ 5mL max)

22 - 2 mL each colour max
28 - 5 mL each colour max
57 - 5 mL each colour max

* When refilling, do not inject more than the maximum amount of ink into the ink chambers, otherwise ink will leak and will result in poor printing quality.

* If ink begin to come out of the top refill holes, you have exceeded the maximum refill level.

THE REFILL PROCESS

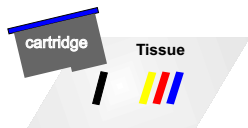
For Kits that contains pre-filled ink syringes (with side measurements)

1. Insert flat rubber / foam piece into the bottom of the cartridge protection clip.
2. Insert cartridge into the protection clip on top of the flat rubber / foam piece (hear a "click" sound).
3. Unscrew protection cap out of the pre-filled ink syringe.
4. Screw supplied needle (with protector) into pre-filled ink syringe.
5. Insert plunger into the back of the pre-filled ink syringe.
6. Remove needle protection cap.
7. Insert needle end of the pre-filled ink syringe into the correct hole on top of the cartridge protection clip and pierce through the cartridge top label.
8. Push the ink plunger slowly (about 10 seconds per mL injection) until you have reached the maximum refill ink level (either the indicated maximum refill amount, or when you begin to see ink coming out of the tops of the refill hole)
9. Remove the ink refilling syringe >> recap the needle protector >> unscrew the needle >> screw protection cap back onto the pre-filled ink syringe >> remove the plunger.
10. Repeat steps 3-9 for each colour to be refilled (taking care to refill into the correct holes!)
11. Wait for a few minutes before removing cartridge from cartridge protection clip - this step will allow ink to be better absorbed into the sponge.

For bulk ink bottles with separate needle / syringes

1. Insert cartridge into cartridge protection clip.
2. Carefully remove top sticker and keep it for later usage if you are unsure of the exact location of the recommended refilling holes.
3. Attach needle to a syringe and fill syringe up with recommended amount of ink.
4. Put needle of the ink-filled syringe into refilling hole until the bottom, then lift the needle up 5mm from the bottom.
5. SLOWLY inject ink into foam of the cartridge until you reach the maximum refill (either the maximum recommended ink amount or just before the ink overfills from the top of the cartridge). Inject at about 10 seconds per mL.
6. Remove syringe and needle from the cartridge refilling hole.
7. Rinse needle and syringe clean by drawing water in and out of the syringe 8-10 times >> recap the needle with protection cap after use.
8. Repeat steps 3-7 with each colour to be refilled.
9. Carefully replace the top sticker back onto the cartridge - ensure you do not cover all of the air vents (otherwise you will not be able to print!)
9. Wait for a few minutes before removing cartridge from cartridge protection clip - this step will allow ink to be better absorbed into the sponge.

AFTER REFILLING



1. After refilling, if you have initially overfilled the cartridge, the cartridge will weep ink from the printhead.
2. Dab the printhead on a piece of clean tissue until cartridge stops weeping. (Do NOT swipe the printhead across the tissue - only DAB to prevent damage to the printhead nozzles).
3. When you get good blocks of relevant colour(s) on the tissue (1 strip of black for black cartridge, 3 strips of different colours for the colour cartridge), and the cartridge has stops weeping ink, you are ready to test-print your refilled cartridge in your printer!
4. If printout is unsatisfactory - please see following section on **priming the cartridge** as well as **trouble-shooting** sections.

THE PRIMING PROCESS

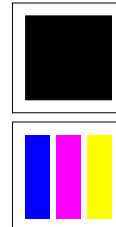
Suction-Priming: (for Kits that contains pre-filled ink syringes)

1. Exchange the flat rubber / foam piece in the cartridge protection clip to the one with an indented rectangular top with a hole (ink extraction rubber).
2. Insert the cartridge into the cartridge protection clip.
3. Insert the tip of an empty small syringe (without the needle) into the bottom of the ink extraction rubber piece.
4. Pull on the syringe until about 0.5 mL of ink has been removed. Then remove the syringe.
5. Remove cartridge from the cartridge protection clip.
6. DAB the printhead on a piece of clean tissue until clear blocks of colours are seen.
7. Test print the cartridge.

Print-Priming: (for bulk ink bottles with separate needle/syringes)

Priming sheets can be used to help clear blockages in a printhead or to simply prime a printhead for use. This is more effective than using the nozzle cleaning function on the printer. Primer Sheets can be downloaded from www.CartridgeDepot.com.au for your convenience.
Black - Using a paint / draw program, draw a large black block to be printed onto an A4 sheet.
Colour - Using a paint / draw program, draw 3 large rectangle blocks of colours (cyan / magenta / yellow) covering an A4 sheet.
To Use: Simply print out the relevant sheet on high resolution and rest the printer for 2 minutes. Repeat if necessary.

Primer Sheets



TROUBLE-SHOOTING

Electrical Contacts

If you get a good DAB image on the tissue when doing the dab test, but no ink comes through when printing, then very likely the electrical contacts have been worn / damaged. You would need to get a new cartridge.

Clogged Jets (if you have left the cartridge too long before refilling)

If you get streaks / missing lines, then either some of the nozzles are damaged (in that case, you would need a new cartridge), or perhaps it's just clogged. In this case >> Warm up a piece of wet clean kitchen paper towel in microwave for 20 seconds. Rest the printhead of the cartridge on the wet towel for a minute. Dry the outside of the cartridge lightly before testing in the printer again. This helps to dissolve clogged inks from the printhead.

Air-blocks in the Sponge

Air blocks in the sponge will result in inconsistent output - good printing followed by faint output, or gradually fainting output. This can be resolved either by sitting the cartridge 20 minutes - 1 hour or via one of the priming procedures (suction priming produces the best results).

CLEAN-UPS

- * Remember to thoroughly clean all your syringes, needles and other equipments before storage.
- * Seal any unused ink after use (do not put old ink back into bottles containing new inks).

HP Cartridge ID / Ink Level Reset Instructions

Black Cartridges: C6656 (#56), C8727 (#27), C9351 (#21)
Colour Cartridges: C6657 (#57), C8728 (#28), C9352 (#22)

For # 21, #27, #56

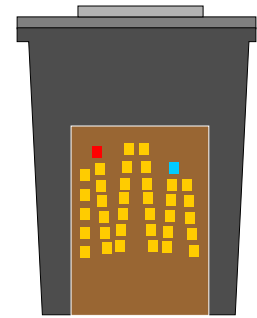
(For most models)

1. Remove the cartridge from your printer.
2. Place a piece of tape over the electrical contact marked in **red** on the picture on the right.
3. Place the cartridge back into the printer (with the tape attached).
4. Printer may run through and print an alignment page.
5. Remove the cartridge from the printer once the alignment page has been printed.
6. Place a 2nd piece of tape over the contact marked in **blue** on the picture on the right.
7. Place the cartridge back into the printer (with both pieces of tapes attached as marked).
8. Printer may print another alignment page.
9. Once an alignment page has been printed, remove the cartridge from the printer.
10. Remove both tape pieces from the electrical contacts.
11. Replace the cartridge back into the printer - ink status monitor should now read "full" for the cartridge.

** Ensure that all tape residuals have been removed cleanly.

** Repeat the procedure if it the procedure did not work for you the first time. (First switch off the printer before repeating)

For # 21, #27, #56



For # 22, #28, #57

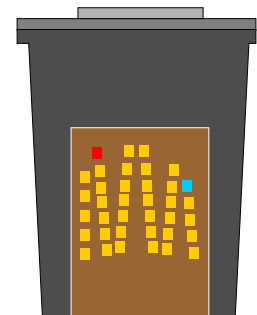
(For most models)

1. Remove the cartridge from your printer.
2. Place a piece of tape over the electrical contact marked in **red** on the picture on the right.
3. Place the cartridge back into the printer (with the tape attached).
4. Printer may run through and print an alignment page.
5. Remove the cartridge from the printer once the alignment page has been printed.
6. Place a 2nd piece of tape over the contact marked in **blue** on the picture on the right.
7. Place the cartridge back into the printer (with both pieces of tapes attached as marked).
8. Printer may print another alignment page.
9. Once an alignment page has been printed, remove the cartridge from the printer.
10. Remove both tape pieces from the electrical contacts.
11. Replace the cartridge back into the printer - ink status monitor should now read "full" for the cartridge.

** Ensure that all tape residuals have been removed cleanly.

** Repeat the procedure if it the procedure did not work for you the first time. (First switch off the printer before repeating)

For # 22, #28, #57



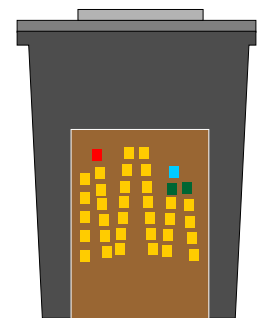
Alternate Reset Procedure

(For all cartridges)

1. Turn off your computer.
2. Remove your cartridge from the printer.
3. Turn off the printer.
4. Place a piece of tape over the electrical contact marked in **red** on the picture on the right.
5. Return cartridge into printer and turn on the printer - the printer will try to print an alignment page.
6. Remove cartridge from the printer.
7. Place a piece of tape over the electrical contact marked in **blue** on the picture on the right.
8. Return cartridge into printer and turn on the printer - the printer will do a series of tests.
9. Remove cartridge from the printer.
10. Place a piece of tape over the 2 electrical contacts marked in **green** on the picture on the right.
11. Return cartridge into printer and turn on the printer - the printer will do a series of tests.
12. Remove cartridge from the printer and carefully remove all tapes from the cartridge.
13. Reinstall the cartridge back into the printer.
14. Turn the printer off.
15. Wait for 20 seconds + and turn the printer back on - ink status monitor should now read "full".
16. Turn your computer back on.

** Ensure that all tape residuals have been removed cleanly.

** Repeat the procedure if it the procedure did not work for you the first time. (First switch off the printer before repeating)



Cartridge Storage

- Do not store your cartridge in a plastic bag, with plastic touching the printhead nozzles - plastic will help ink to migrate across nozzles and contaminate the colours.
- Do not place the blue protection labels from the original cartridges back onto the cartridge - it will help ink migrate to nearby nozzles and contaminate nearby colours.
- Do not store the cartridge on its side, or up-side-down, as ink will settle away from the printhead nozzles, and can cause missing colours.
- Do not seal off all the indentations on the top label - as the cartridge need to have air flow into the cartridge to equalize the pressures inside the cartridge for printing.